

# Mobile Survey

## Features

### Site Surveys

- Perform 802.11abgn\* touch-operated site surveys
- Survey measurements shown during survey
- Access points located after survey
- Pinch-zoom, finger-pan, haptic feedback
- Transfer projects to/from Ekahau Site Survey

### Map View, Coverage Analysis

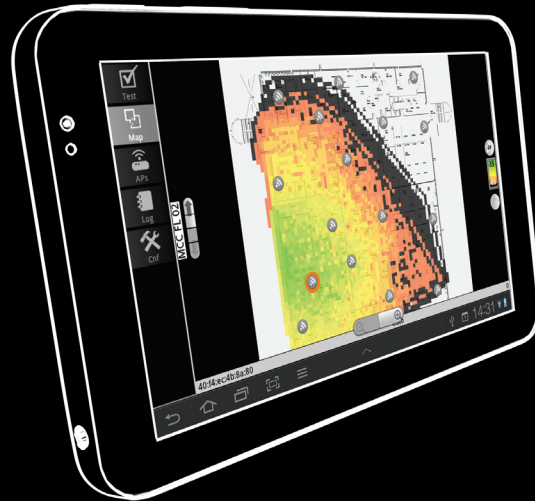
- Colorful, configurable heatmaps
- Flexible AP and AP group selection
- Export heatmap image
- See your Wi-Fi infrastructure layout
- Live AP status display

### On-the-Spot Network Analysis

- Analyze Wi-Fi in the current location
- See if your Wi-Fi works for VoIP, RTLS, data
- Simultaneous active and passive testing
- Signal strength
- Data rate
- Packet loss
- Round-trip time
- Rogue AP detection

### Background Monitoring

- Continuous network monitoring from a client device point-of-view
- Runs transparently in the background
- Network failure alerts with alarm, vibration, log
- Rogue AP warnings
- Desktop widget



## Wi-Fi Surveys, Mapping and Monitoring via Smartphone or Tablet

Ekahau Mobile Survey is a powerful Android application for Wi-Fi network administrators, combining the power of enterprise-grade Wi-Fi tools with the convenience and ease of use of a mobile phone app.

The application includes powerful Wi-Fi network site survey, coverage mapping, analysis and monitoring tools. For the first time it puts those tools in the palm of the wireless network engineers' hands. Available for most Android-based smartphones and tablets, Ekahau Mobile Survey is always with you, even working in the background to identify network problems. And, it costs a fraction of the cost of conventional, purpose-built Wi-Fi hardware tools.

## Simple Site Surveys, Vivid Coverage Heatmaps

For map-based Wi-Fi network verification and optimization, Mobile Survey supports 802.11abgn\* multi-floor site surveys. Performing touch-operated surveys on a light-weight tablet or phone take convenience to a new level.

After the survey, the tool automatically locates the nearby access points and displays coverage heatmaps. The coverage analysis is flexible, including single-AP coverage view, an SSID-based coverage view, and configurable coverage limit. Ekahau Mobile Survey also displays the access point locations and configurations on your floor plan. In real-time the tool graphically displays which access points are audible, as well as the ones with connectivity problems.

All Mobile Survey features are available as stand-alone applications, without the need for other tools. However, the survey data can be exported to Ekahau Site Survey (the leading laptop-based planning, analysis and site survey tool) for further analysis and reporting. Ekahau Site Survey projects can also be brought to Mobile Survey.

\*Depending on the Wi-Fi radio on the phone/tablet

## On-the-Spot Analysis

Ekahau Mobile Survey provides easy-to-use, yet powerful, tools for analyzing Wi-Fi network performance on the spot, without a map. Using active and passive tests, the tool provides detailed information about network coverage, performance, connectivity, rogue access points and roaming. Ekahau Mobile Survey automatically compares the network metrics to your requirements, ensuring optimal performance – be it for voice, video, data, or location tracking.

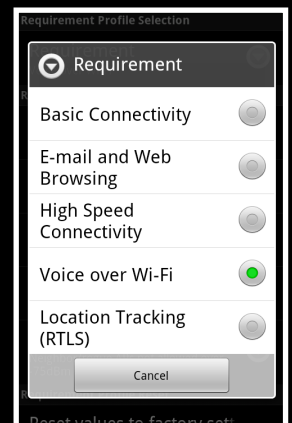
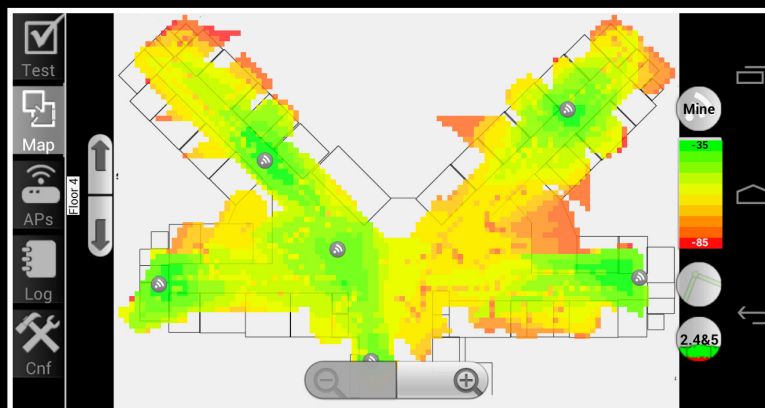
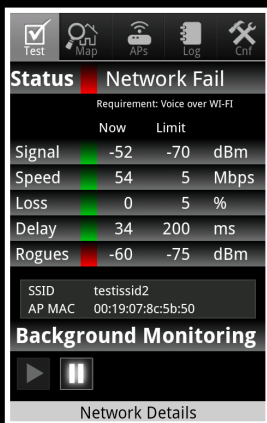
In addition to network testing, Mobile Survey lists all the audible access points and their characteristics in real-time.

## Always Monitoring

A key feature about the Ekahau Mobile Survey is that it's always with you and constantly keeps tabs on network performance.

Unlike other Wi-Fi monitoring solutions, Ekahau Mobile Survey continually monitors the network on the smartphone or tablet even when you are not actively using the application. For example, if you walk close to a rogue AP, or into a coverage hole, an alarm will sound to alert you to the problem.

Most network-based Wi-Fi monitoring solutions only monitor the network from the access point side. However, access points and sensors can't see everything, such as low-power rogue access points, coverage holes, or communication delays between the end user device and the application server. Ekahau Mobile Survey can diagnose these problems and many others that are typically invisible to the conventional tools.



## System Requirements

[ekahau.com/mobilesurvey](http://ekahau.com/mobilesurvey)

Android (2.1+) powered smartphone or tablet  
Supported devices: [ekahau.com/mobilesurvey](http://ekahau.com/mobilesurvey)

[www.ekahau.com/wifidesign](http://www.ekahau.com/wifidesign) | [wifidesign@ekahau.com](mailto:wifidesign@ekahau.com)

**Ekahau East Coast**  
(Headquarters)  
1851 Alexander Bell Drive  
Suite 105  
Reston, VA 20191  
Tel: 1-866-4EKAHAU  
Fax: 1-703-860-2028  
[sales-america@ekahau.com](mailto:sales-america@ekahau.com)

**Ekahau Europe**  
(Sales, R&D, Product Management)  
Hiilikatu 3  
00180 Helsinki, Finland  
Tel: +358-20-743 5910  
Fax: +358-20-743 5919  
[sales-europe@ekahau.com](mailto:sales-europe@ekahau.com)

**Ekahau APAC**  
(Regional office)  
B38, Tower 8, Imperial Cullinan  
10 Hoi Fai Road, Tai Kok Tsui  
Hong Kong  
Tel: +852 9227 8406  
[sales-asia@ekahau.com](mailto:sales-asia@ekahau.com)

Global Tech Support: [www.ekahau.com/support](http://www.ekahau.com/support)