



WireXpert 500 is a affordable copper cable certification tester for twisted pair cabling systems with performance levels up to CAT6A/Class E_A. Electricians and network cabling contractors can perform certification testing on copper installations with speed and accuracy using WireXpert 500. In addition to standards based permanent link and channel certification, WireXpert 500 offers optional test adapters for coaxial cable testing and patch cord testing.

IT Networks

CABLE CERTIFIER

WireXpert 500

Key Features

- Advanced cable certification up to 500 MHz
- Certifies to Industry standards – Class D/E/E_A & Category 5e/6/6A
- Meets TIA and ISO Level III accuracy requirements
- Certification testing of Patch cords
- Industrial Ethernet testing with M12 connectivity
- Advanced reporting and documentation
- A affordable certifier for premise cabling and industrial Ethernet

Easy to Use and ruggedized design

WireXpert 500 comes with an intuitive touch sensitive user interface, featuring bright colour LCD screens designed for industrial, heavy duty usage. The Dual Control System (DCS™) – featuring identical devices for remote and main unit – makes it fast and simple to operate the test cycles. Whether used by two technicians or one person working alone, walking time between outlets is minimized.

Fast and simple for highest productivity

WireXpert 500 completes CAT 6A certification test in seconds. It offers intuitive navigation through the on screen menus, and generates professional reports through the accompanying eXport PC software.

Proven Accuracy

WireXpert 500 is based on measurement system independently verified by highly respected test laboratories including ETL.

Kit Includes

WireXpert 500 LAN Copper Cable Certifier - Class D, E, E_A and CAT5, 6, 6A

Includes two measurement units: Local and remote,
2 x CAT 6A channel adapters,
2 x CAT 6A link adapters, 2 x headsets,
Li-Ion batteries, power supplies, USB drive,
soft carry case,
calibration certificate and reporting software



CABLE CERTIFIER

Copper patch cord testing with WireXpert

WireXpert 500 offers an efficient way for quickly identifying and recording the performance of patch cords. With its fast and accurate dual-ended testing, WireXpert 500 patch cord test kits are suitable for both manufacturing test applications, as well as for incoming inventory inspection at end user premises. WireXpert 500 patch cord test kits are available for testing CAT5e, CAT6, and CAT6_A patch cords.

Industrial Ethernet cabling test

The WireXpert 500 industrial Ethernet cable test solution comprise of M12 adapter kits with both channel and permanent link configurations using M12 industrial Ethernet connectors are supported. Industrial Ethernet kits supporting X-Coded M12 interface are also available, making it possible to effectively test 10-Gig ready industrial Ethernet cables.

Coax cable test

WireXpert 500 also supports testing of coaxial cables for attenuation and return loss with the optional coax test adapters.

Adapters & Accessories for Copper Cable Certification

Adapters & Accessories

Class E_A / CAT6A Channel adapters

Class E_A / CAT6A permanent link adapters

Pair of coax adapters

Pair of CAT6A patch cord adapters

Hard carrying case

Pair of nylon covers

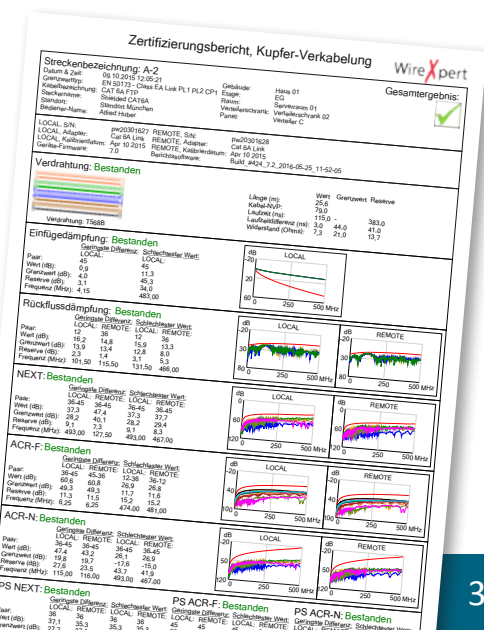
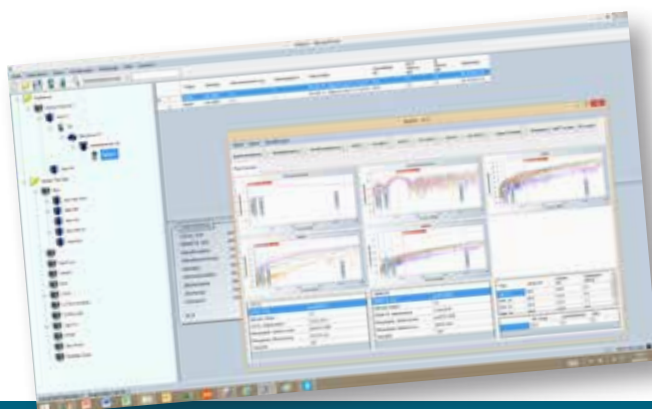
For more options and accessories, please contact your Psiber Reseller.

Professional Data Management with eXport Software

WireXpert 500 includes eXport computer-based reporting software. eXport facilitates data management and generation of professional reports and warranty documents.

In addition, eXport Software enables list-based testing, a hierarchical cable labelling scheme.

With eXport it's also possible to correct measurements which were initially performed with incorrect measurement standards. With re-certification, the operator can apply the right measurement standards to the data retroactively. Data integrity remains because the date of the measurements does not change.



NORTH AMERICA & CANADA

Softing Inc.
Knoxville, Tennessee
Phone: +1.865.251.5252
E-mail: sales@softing.us

ASIA/PACIFIC

Singapore

Softing Singapore Pte. Ltd.
Singapore
Phone: +65-6569-6019
E-mail: asia-sales.itnetworks@softing.com

China

Softing Shanghai
Shanghai
Phone: +86-21-54133123
E-mail: china-sales.itnetworks@softing.com

EUROPE/MIDDLE EAST/AFRICA

Germany

Softing IT Networks GmbH
Haar, Munich
Phone: +49 89 45 656 660
E-mail: info.itnetworks@softing.com

France

Softing SARL
Créteil, Île-de-France
Phone: +33 1 45 17 28 05
E-mail: info.france@softing.com

Italy

Softing Italia Srl.
Cesano Boscone, Milano
Phone: +39 02 4505171
E-mail: info@softingitalia.it

Austria

Buxbaum Automation GmbH
Eisenstadt
Phone: +43 2682 7045 60
E-mail: office@myautomation.at

For technical information and support please contact the Softing office in your country.

<http://itnetworks.softing.com>

For more information please contact:

©2016 Softing IT Networks. In line with our policy of continuous improvement and feature enhancement, product specifications are subject to change without notice. All rights reserved. Softing and the Softing Logo are trademarks or registered trademarks of Softing AG. All other trademarks, registered or unregistered, are sole property of their respective owners.

Parameter	Specifications
Copper testing	
Certification Testing	TIA 568-C.2 CAT 5e, 6, 6A ISO/IEC 11801, EN 50173 Class D,E,E _A CAT 5e, 6, and 6 _A patch cord
Max cable length for dual ended Autotest	500m
Insertion Cycles	Channel: 10,000 typical Permanent link: 5,000 typical
TEST PARAMETERS	As specified in TIA 1152, IEC 61935-1
Wiremap	
Loop Resistance	0 to 40 Ω, ±0.1 Ω
Length	0 to 500m, ±0.5m (dual ended testing)
Propagation Delay and Delay Skew	0 to 5000 ns, ±1 ns
Attenuation	0 to 70 dB, ±0.1dB
Pair-to-Pair and Power-Sum NEXT	0 to 85 dB, ±0.2 dB
Pair-to-Pair and Power-Sum ACRF	0 to 85 dB, ±0.2 dB
Return Loss	0 to 40 dB, ±0.2 dB
ACRN, PSACRN	-25 to 85 dB, ±0.5 dB
Advanced Diagnostics	Time-domain fault Locator for RL and NEXT
Measurement Accuracy	exceeds TIA 1152 & IEC61935-1 level IIIe
Measurement Frequency Range	1- 500 MHz
General Specifications	
Interfaces	Probe Interface, RJ-45 Ethernet, USB host and device, talkset, power jack
Display	6" industrial LCD, touch sensitive area on both units
Enclosure	Ruggedized plastic with rubber overmould, withstands 1.5m drop test on hard surface
Remote unit abilities	View test results, save tests, start autotest
Power Supply	AC 100-240V to 12V, 3A power adapter
Input over-voltage protection	Protected against Telco voltages
Battery	Removable and rechargeable Li-Ion
Battery Capacity	>8 hours continuous operation
Internal Storage Capacity	2000 copper test results with full plot information
External Storage	USB Flash Drive
Dimensions	232 X 126 X 87 mm (9.1 X 5.0 X 3.4 inch)
Weight	Approx. 1.4 kg (3.0 lb) / unit
Supported Languages	Chinese, Czech, English, Finnish, French, German, Italian, Japanese, Korean, Polish, Portuguese, Russian, Spanish, Swedish, Turkish
Calibration period	1 year
Environmental	
Operating Temperature	0 to 40°C
Storage Temperature	-20 to 60°C
Relative humidity	10% to 80%